



HEIGHT SAFETY PRODUCTS



TEXORA

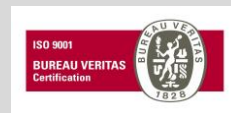
Safety Harness

Model: ESSENTIAL TX/ H1



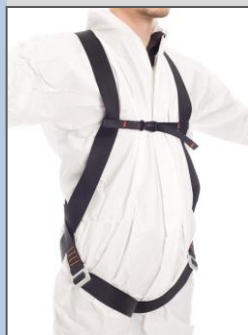
This harness is economical, simple and light construction with optimal wearing comfort.

- Conforms to EN 361, CE Approved
- Minimum Breaking Strength of 1500 kg
- 2 Way Adjustments - Chest Strap and Legs
- 1 Dorsal D-ring - attachment point
- 45mm High Tenacity Polyester Webbing
- TEFLON Impregnated for Water and Oil Repelency
- Fits Most Sizes
- Weight 0,59 Kg



Also available in the following colors:

Red
Blue
Neon Green
Neon Orange
Black



Black



Neon Green



Blue

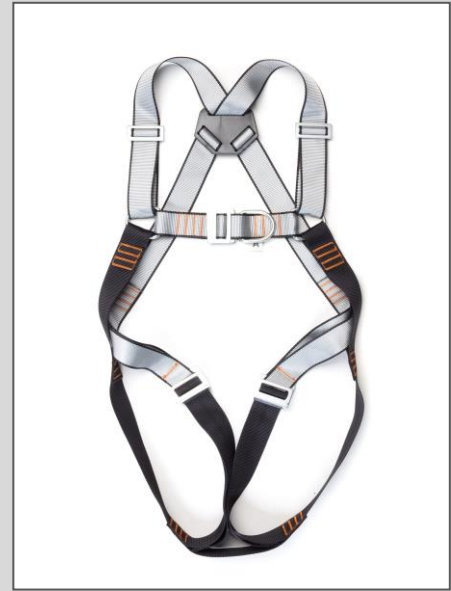
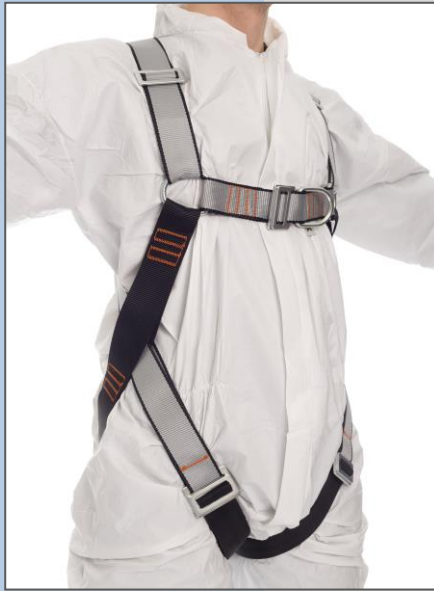


Red

TEXORA

Safety Harness

Model: ESSENTIAL TX/ H2



This is multipurpose harness, light and ergonomic construction, with attachment points at the back and the front, to extend the working capability of the harness. A variety of devices can be also used with the front D-ring. The ring connection between chest and shoulder straps ensures that there is no stress loading when force is applied to the front D-ring.

- Conforms to EN 361, CE Approved
- Minimum Breaking Strength of 1500 kg
- 4 Way Adjustments:
 - 2 for Shoulders and 2 for Legs
- 1 Dorsal D-ring - Attachment Point
- 1 Frontal D-ring - Attachment Point
- 45mm High Tenacity Polyester Webbing
- Two-Separate Colors- For Shoulders Straps and Legs Straps, for easier dressing
- TEFLON Impregnated for Water and Oil Repelency
- Fully Adjustable - One Size Fits All
- Weight 0,98 Kg

Also available in the following colors:



Neon Green/Black



Red/Black

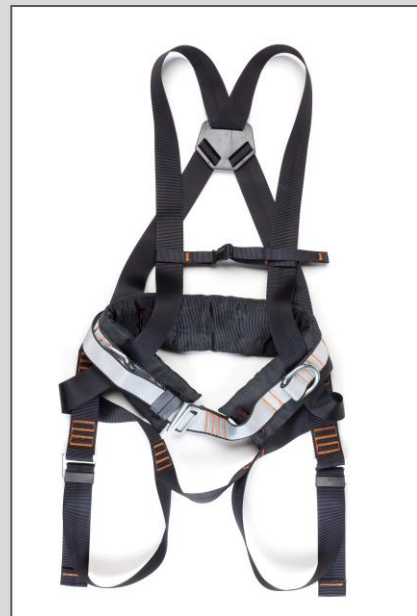
Red/black
Blue/black
Neon Green/black
Neon Orange/black
Black



TEXORA

Safety Harness

Model: ESSENTIAL TX/ H3

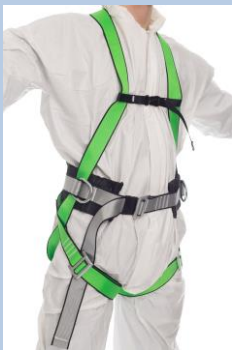


This 3-Point harness combines simple and ergonomic harness with a comfortable work positioning belt, two-in-one.

The harness is fitted with a rear D-ring and two side D-rings mounted to the belt for pole climbing or can also be used for work positioning on various open structures.

- **Conforms to EN 361 & EN 358, CE Approved**
- **Minimum Breaking Strength of 1500 kg**
- **3 Way Adjustments:**
 - 1 for Cheststrap, 2 for Legs and 1 for Belt
- **1 Dorsal D-ring - Attachment Point**
- **2 Frontal D-rings - For work Positioning**
- **45mm High Tenacity Polyester Webbing**
- **Two-Separate Colors- For Harness and For Belt, for easier dressing**
- **TEFLON Impregnated for Water and Oil Repelency**
- **Fits Most Sizes**
- **Weight 1,05 Kg**

Also available in the following colors:



Neon Green



Red

Red
Blue
Neon Green
Neon Orange
Silver Grey



TEXORA

Safety Harness

Model: ESSENTIAL TX/H33



This is multipurpose harness, light and ergonomic construction, with attachment points at the back and the front, to extend the working capability of the harness.

- Conforms to EN 361, CE Approved
- Minimum Breaking Strength of 1500 kg
- 5 Way Adjustments:
 - 1 for Cheststrap, 2 for Legs and 2 for cheststrap
- 1 Dorsal D-ring - Attachment Point
- 2 Frontal attachment points
- 45mm High Tenacity Polyester Webbing
- Two-Separate Colors- For Harness and For Belt, for easier dressing
- TEFLON Impregnated for Water and Oil Repelency
- Fits Most Sizes

Also available in the following colors:

Red/black
Blue/black
Neon Green/black
Neon Orange/black
Black



TEXORA

Safety Harness

Model: ESSENTIAL TX/H4



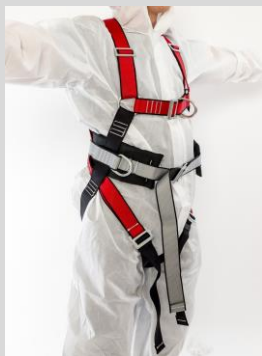
This 4-Point harness combines simple and ergonomic harness with a comfortable work positioning belt, two-in-one.

The harness is fitted with a rear D-ring and two rings mounted to the belt for pole climbing or can also be used for work positioning on various open structures. It also has Front D-ring as attachment point.

- **Conforms to EN 361 & EN 358, CE Approved**
- **Minimum Breaking Strength of 1500 kg**
- **5 Way Adjustments:**
 - 2 for Legs, 2 for cheststraps and 1 for Belt**
- **1 Dorsal D-ring - Attachment Point**
- **3 Frontal D-rings - 2 For work Positioning, 1 as attachment point**
- **45mm High Tenacity Polyester Webbing**
- **Two-Separate Colors- For Harness and For Belt, for easier dressing**
- **TEFLON Impregnated for Water and Oil Repelency**
- **Fits Most Sizes**

Also available in the following colors:

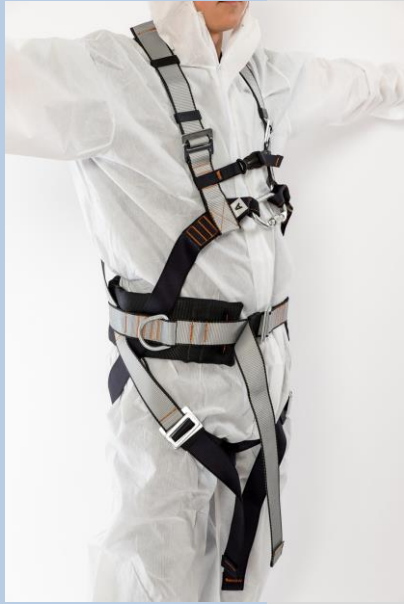
Red
Blue
Neon Green
Neon Orange
Black



TEXORA

Safety Harness

Model: ESSENTIAL TX/H5



This 5-Point harness combines simple and ergonomic harness with a comfortable work positioning belt, two-in-one.

The harness is fitted with a rear D-ring and two rings mounted to the belt for pole climbing or can also be used for work positioning on various open structures. It also has 2 front loops as attachment points.

- **Conforms to EN 361 & EN 358, CE Approved**
- **Minimum Breaking Strength of 1500 kg**
- **6 Way Adjustments:**
 - 1 for Cheststrap, 2 for Legs, 2 for cheststrap and 1 for Belt**
- **1 Dorsal D-ring - Attachment Point**
- **2 Frontal D-rings - For work Positioning**
- **45mm High Tenacity Polyester Webbing**
- **Two-Separate Colors- For Harness and For Belt, for easier dressing**
- **TEFLON Impregnated for Water and Oil Repelency**
- **Fits Most Sizes**
- **Weight 1,05 Kg**

Also available in the following colors:

Red
Blue
Neon Green
Neon Orange
Black



TEXORA

Safety Harness

Model: EXTRA TX/ H4



This 4-Point harness is ergonomic harness with a comfortable work positioning belt, two-in-one. Spun dyed yarn woven webbing, Cordura waist belt for better abrasion resistance.

The harness is fitted with a rear D-ring and two rings mounted to the belt for pole climbing or can also be used for work positioning on various open structures. It also has 1 front D-ring as attachment points and rip stitch indicators on the backside.

Can be supplied with or without shoulder and leg pads.

- **Conforms to EN 361 & EN 358, CE Approved**
- **Minimum Breaking Strength of 1500 kg**
- **6 Way Adjustments:**
 - 1 for Cheststrap, 2 for Legs, 2 for cheststrap and 1 for Belt**
- **1 Dorsal D-ring - Attachment Point**
- **2 Frontal D-rings - For work Positioning**
- **45mm High Tenacity Polyester Webbing**
- **Two-Separate Colors- For Harness and For Belt, for easier dressing**
- **TEFLON Impregnated for Water and Oil Repelency**
- **Fits Most Sizes**
- **Weight 1,05 Kg**



Neon Green

Red

TEXORA

Safety Harness

Model: PROFESSIONAL TX/H1-FR



This harness is made of fire resistant Kevlar webbing and is used for spark or molten metal drop protection when grinding and cutting, welding, etc.

- **Conforms to EN 361, CE approved**
- **Minimum Breaking Strength of 1500 kg**
- **2 Way Adjustments:**
 - 2 for Legs**
- **1 Dorsal D-ring - Attachment Point**
- **45mm Kevlar webbing**
- **Fits Most Sizes**



TEXORA

Safety Harness

Model: PROFESSIONAL TX/H1-BIO



This harness can provide various solutions for places where safety is a priority, including the utility and oil rig industries. The webbing features a protective coating that resists electricity, substantially increases abrasion and moisture resistance and makes it easy to clean. Rigorous, standardized tests have determined that webbing is truly spark resistant. Its abrasion-resistant coating can be easily cleaned and the harness quickly returned to service.

- **Conforms to EN 361, CE approved**
- **Minimum Breaking Strength of 1500 kg**
- **2 Way Adjustments:**
 - 2 for Legs
- **1 Dorsal D-ring - Attachment Point**
- **45mm High Tenacity Polyester Webbing with special protective coating**
- **Fits Most Sizes**



TEXORA

Work Positioning Belt

Model: TX/B1



- Conforms to EN 358, CE approved
- CE approved -
- Two side attachment points with D-rings
- 100mm soft back pad for Better Support and Comfort
- 45mm Polyester webbing
- TEFLON water and oil repellent coating both waist pad and webbing
- Fully adjustable to fit most sizes

Note:

It is strongly recommended to use a full body harness with energy absorber as a fall arrest system.



TEXORA

Work Positioning Belt

Model: PROFESSIONAL TX/B1



The outer part made of CORDURA gives an extra durability and perfect anti-abrasion resistance properties.

The inner part is heavyweight stretch fabric to give the shape, dual density foam.

TEFLON coated and spun-dyed yarn woven webbing for water and oil repellency.

Light reflecting stripes on both sides of webbing for better visibility in dark environment.

Automatic steel buckle for quick connection/disconnection.

- Conforms to EN 358
- CE approved
- Two side attachment points with D-rings
- Ergonomic soft back pad for Better Support and Comfort
- 45mm Polyester webbing with light reflecting stripes
- TEFLON water and oil repellent coating webbing
- Fully adjustable to fit most sizes

Note:

It is strongly recommended to use a full body harness with energy absorber as a fall arrest system.

